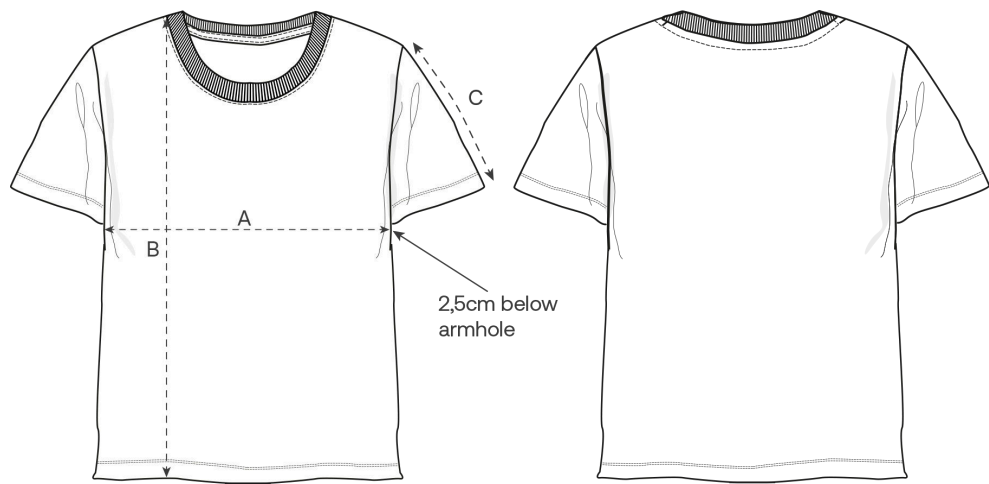


Size Guide



Front

Back

| Measurement in cm | XS   | S    | M    | L    | XL   | XXL  | 3XL  |
|-------------------|------|------|------|------|------|------|------|
| A - Half Chest    | 41.5 | 44.5 | 47.5 | 50.5 | 53.5 | 57.5 | 61.5 |
| B - Body Length   | 59   | 62   | 64   | 66   | 68   | 70   | 72   |
| C - Sleeve Length | 17   | 17.5 | 18   | 18.5 | 19   | 20   | 20.5 |

Packing

| Sizes        | XS  | S   | M   | L   | XL  | XXL | 3XL |
|--------------|-----|-----|-----|-----|-----|-----|-----|
| Pieces / bag | 5   | 5   | 5   | 5   | 5   | 5   | 5   |
| Pieces / box | 100 | 100 | 100 | 100 | 100 | 100 | 50  |



The iconic mid-light women’s fitted t-shirt

|        |            |         |
|--------|------------|---------|
| Fitted | XS → 3XL * | 155 GSM |
|--------|------------|---------|

Description

Set-in sleeve  
1X1 rib at neck collar  
Inside back neck tape in self fabric  
Narrow twin needle topstitch at sleeve cuff and hem

Composition

Shell - Single Jersey  
100% Cotton - Organic Ring Spun Combed - 155.0 GSM  
Fabric washed

Care instruction

Wash similar colours together, no ironing on print, wash and iron inside out.



Country of origin

Weaving : Bangladesh  
Dyeing : Bangladesh  
Assembly : Bangladesh

